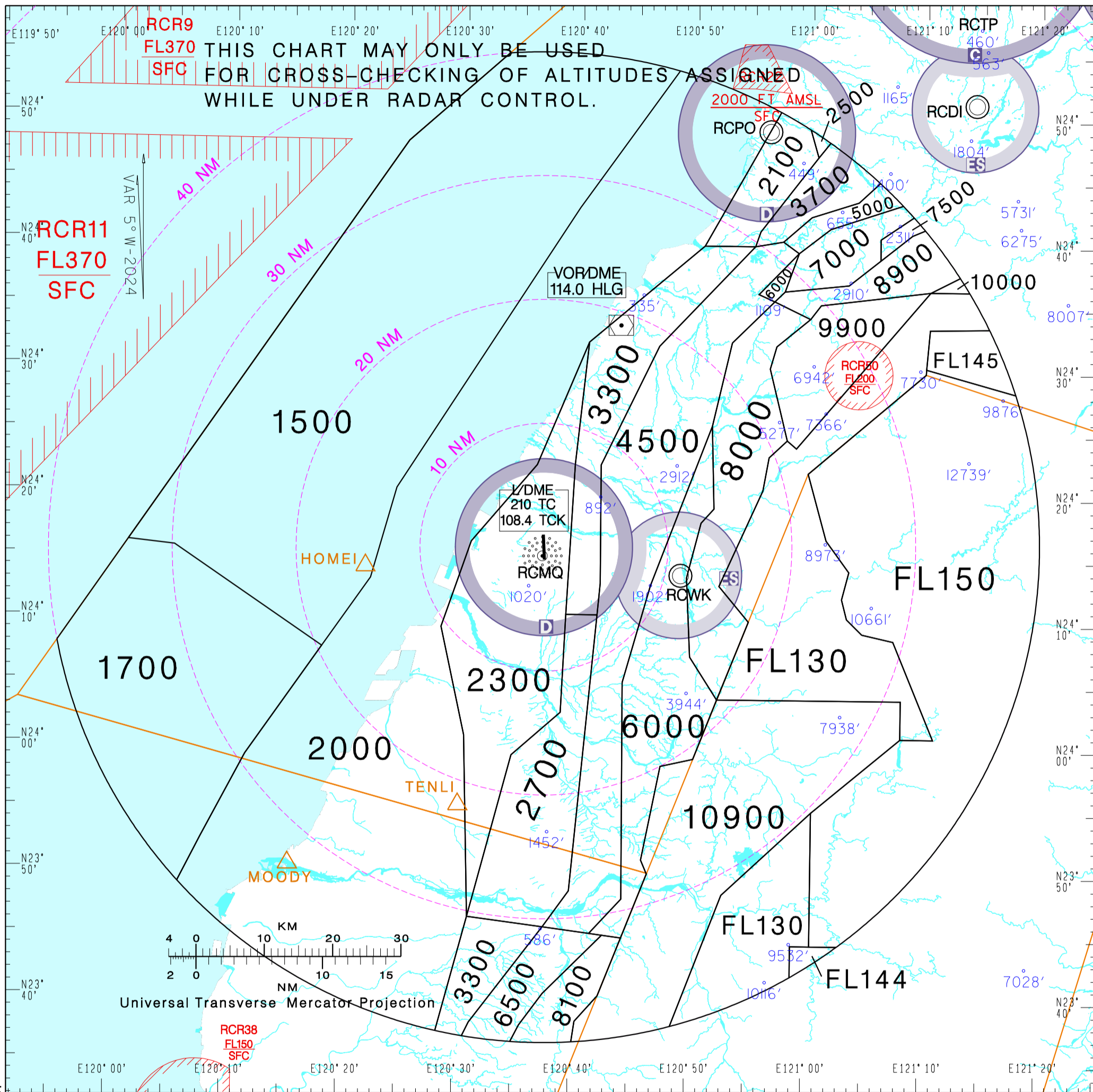


航管監視最低高度圖
ATC Surveillance
Minimum Altitude Chart

AD ELEV.
RCMQ 665FT
Trans Level: FL130
Trans Alt: 11,000'

TAIPEI APP 129.6 130.1 257.8	CCK TOWER 118.75 120.25 ATIS 127.75
------------------------------------	---

臺中/清泉崗機場
Taichung/Cingcyuangang Aerodrome



NOTE

- Distance circles are centred on RCMQ ARP (241554N 1203715E).
- Minimum altitudes are calculated taking into account of minimum clearance above terrain/obstacles. Radar control service cannot be provided to aircraft below the applicable minimum. Aircraft at designated altitude in relevant sector is not assured of radar contact.
- Altitudes, Levels, Heights are in feet.
- Only significant spot heights are shown.
- LOSS OF COMMUNICATION
 - SQUAWK 7600 immediately, and
 - follow AIP ENR 1.6.4 "Radio Communication Failure Procedures."

CHANGES: MVA SECTOR UPDATED.